

# AGRARIAN URBANISM



HOUSTON TOMORROW

*Houston*

*12 January 19*

STEPHEN A. MOUZON, AIA CNU LEED

THE NEW URBAN GUILD

*Miami Beach, Florida, USA*

# FOOD *from the* GROCERY STORE

★ MOST of it ALSO REQUIRES a PASSPORT

★ 1,500 MILES TRAVELED

[www.originalgreen.org](http://www.originalgreen.org)



[www.originalgreen.org](http://www.originalgreen.org)

# FOOD SECURITY?

★ EXCHANGE RATES

★ POLITICAL ISSUES

★ AGRIBUSINESS



[www.originalgreen.org](http://www.originalgreen.org)

# INDUSTRIAL ECONOMICS REQUIRE BAD-NEIGHBOR AGRICULTURE

★ CHEMICAL FERTILIZER

★ CROP-DUSTING

★ FOULED RUNOFF

★ CAFO

[www.originalgreen.org](http://www.originalgreen.org)

# GOOD-NEIGHBOR AGRICULTURE



[www.originalgreen.org](http://www.originalgreen.org)

# MAN-HOUR *vs.* LAND AREA EFFICIENCY



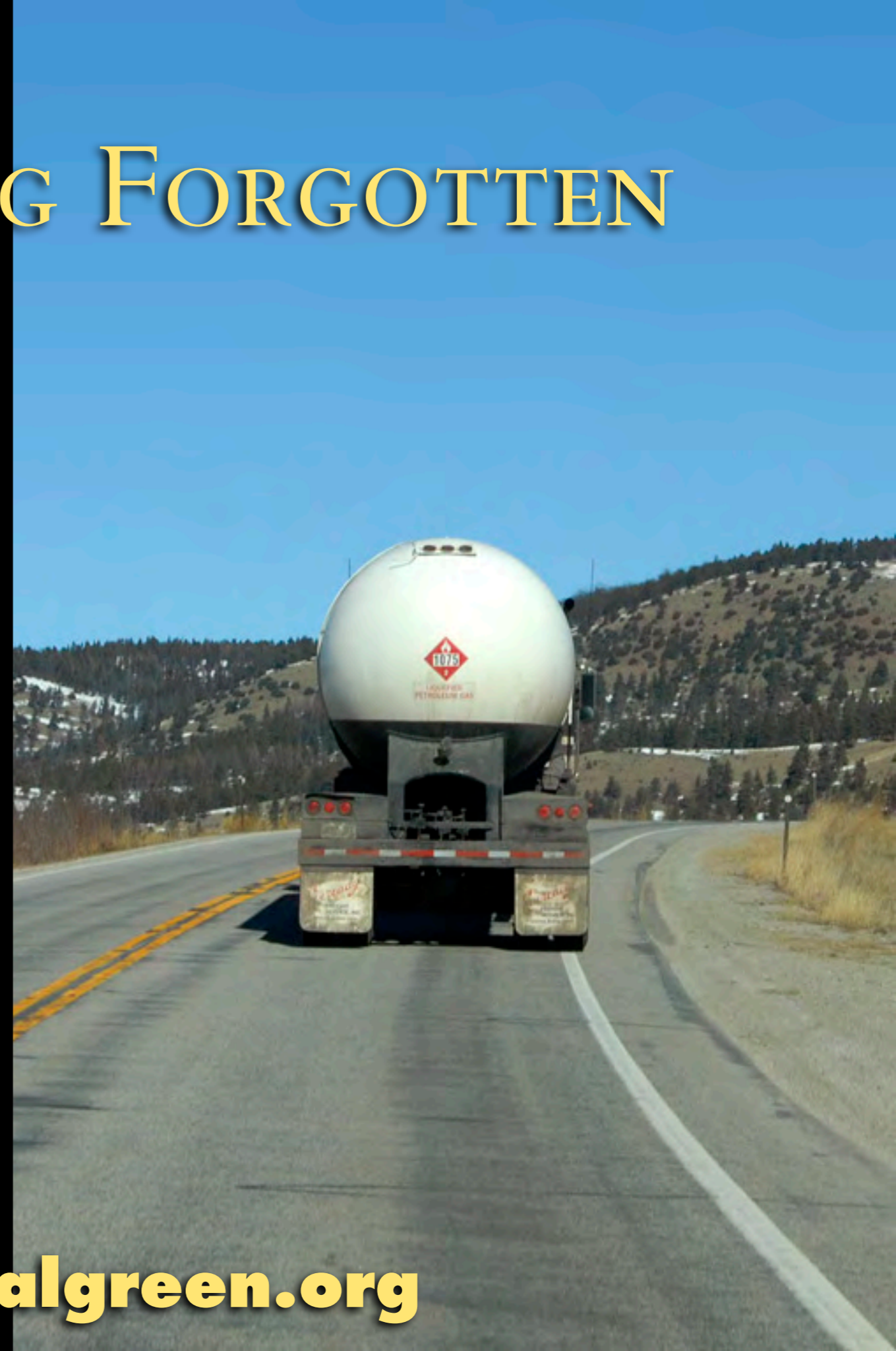
[www.originalgreen.org](http://www.originalgreen.org)

EFFICIENCY *of the*  
FARMER *on a* TRACTOR?



[www.originalgreen.org](http://www.originalgreen.org)

# WHAT'S BEING FORGOTTEN



[www.originalgreen.org](http://www.originalgreen.org)

# CALORIE INEFFICIENCY



[www.originalgreen.org](http://www.originalgreen.org)

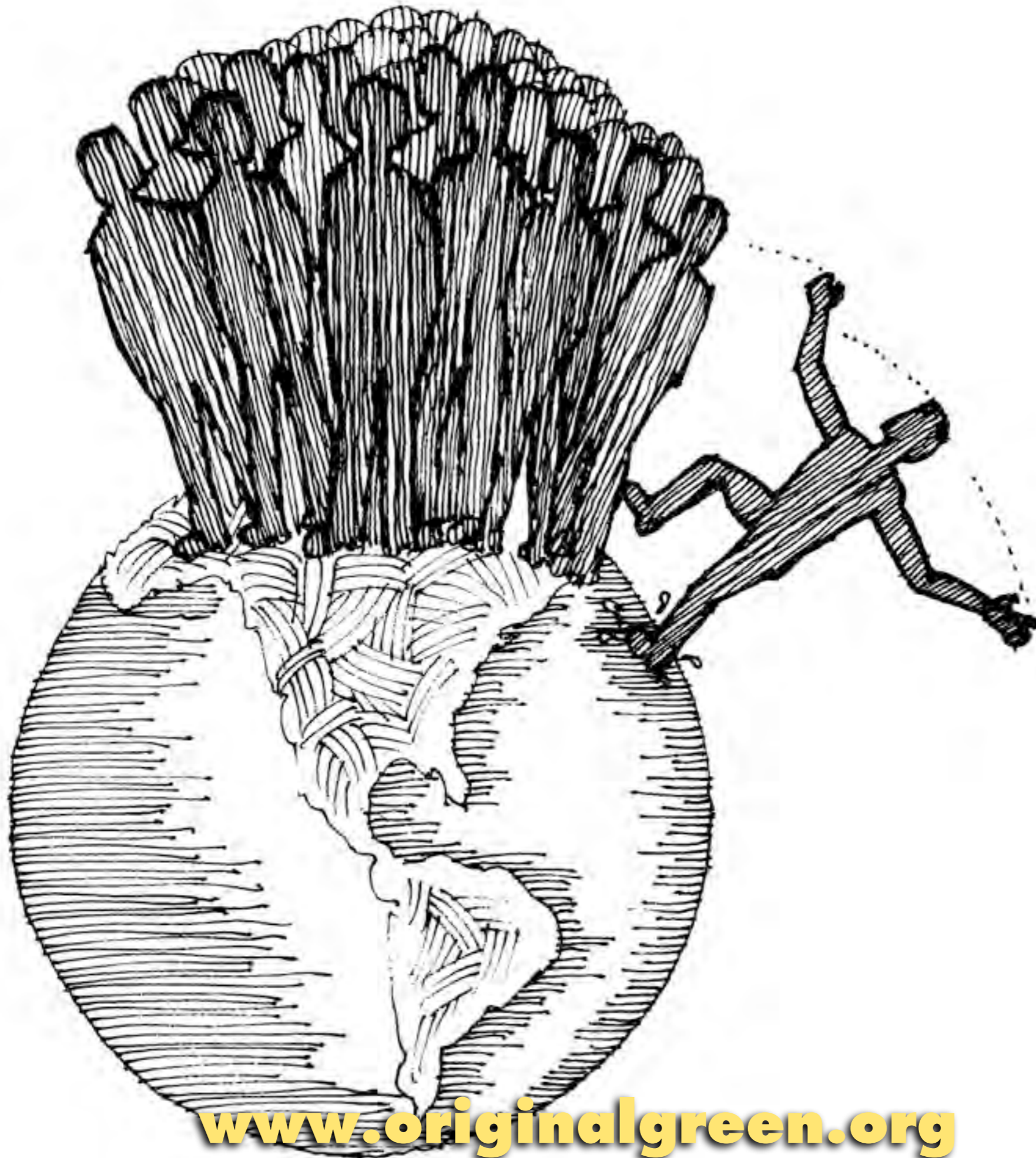
# EXPORTING *the* GUILT



[www.originalgreen.org](http://www.originalgreen.org)

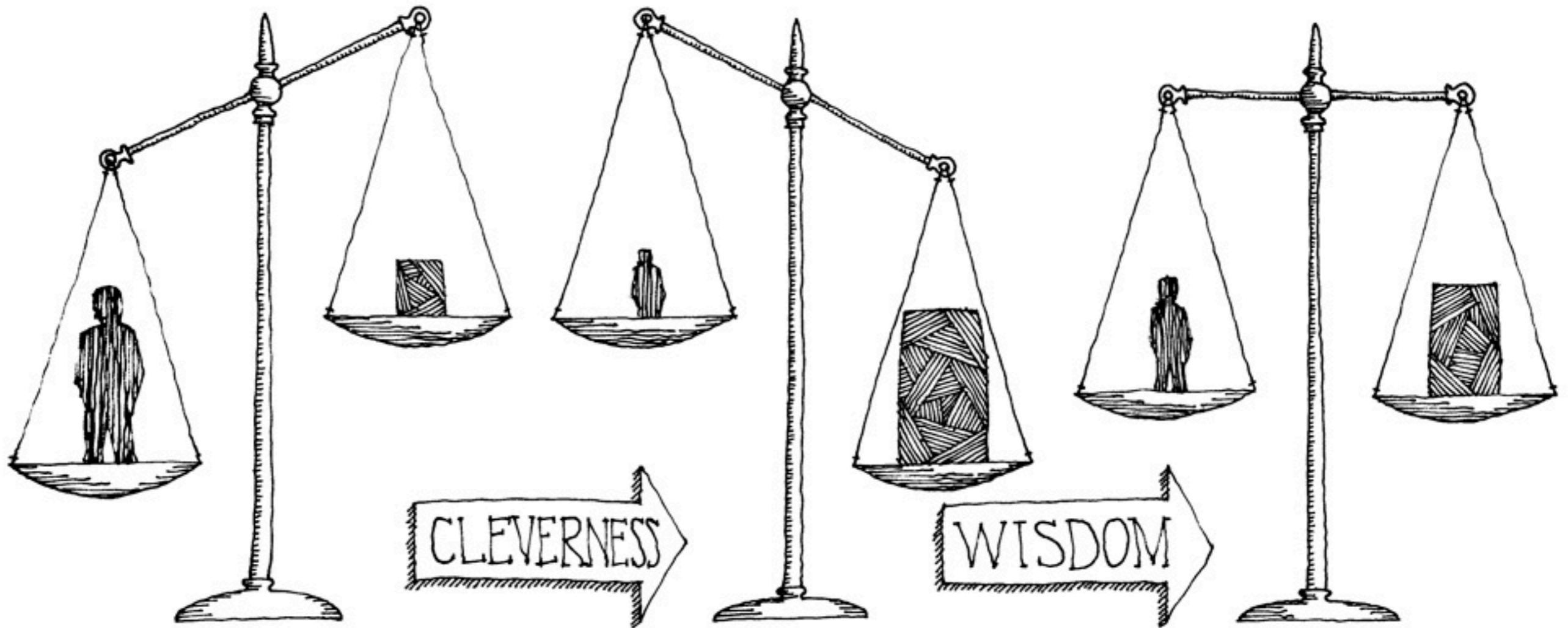


[www.originalgreen.org](http://www.originalgreen.org)



[www.originalgreen.org](http://www.originalgreen.org)

# WHAT *it* TAKES *to* STAY ALIVE



[www.originalgreen.org](http://www.originalgreen.org)

# *the* ORIGINAL GREEN



[www.originalgreen.org](http://www.originalgreen.org)

MICRON

*the ORIGINAL GREEN* UNLOCKING *the* MYSTERY of TRUE SUSTAINABILITY

*the*  
**ORIGINAL  
GREEN**

UNLOCKING *the* MYSTERY of TRUE SUSTAINABILITY

STEPHEN A. MOUZON  
*The Guild Foundation Press  
Miami*

*Foreword by*  
ROBERT F. KENNEDY, JR.

NEW  
GREEN  
GUILD  
FOUNDATION

UNIVERSITY  
OF  
FLORIDA  
PRESS

ROBERT F. KENNEDY, JR.  
*Foreword by*

# THE MORAL IMPERATIVE

- ★ FOOD SECURITY
- ★ VALUE OF LONG VIEW
- ★ ADJACENCY TO NATURE
- ★ LOCAL FOOD
- ★ LOCAL CUISINE
- ★ LAND TRUST TAX CREDITS
- ★ SECURE EDGE

[www.originalgreen.org](http://www.originalgreen.org)

A street scene with historic stone buildings, parked cars, and a person walking. The scene is dimly lit, suggesting dusk or dawn. The buildings are multi-story with windows and balconies. A sign for 'ANTHONY'S HOUSE BED & BREAKFAST' is visible on one of the buildings. A person is walking on the sidewalk in the distance. The overall atmosphere is quiet and historic.

# THE ORIGINAL GREEN

**S** NOURISHABLE L O V A B L E **S**

**E** ACCESSIBLE D U R A B L E **G**

**A** SERVICEABLE F L E X I B L E **N**

**L** SECURABLE F R U G A L **I**

**R** **B**

An aerial photograph of a hillside town. The foreground is dominated by terraced vineyards with stone walls. The middle ground shows a cluster of buildings, including a prominent large stone tower with a central archway. The background shows more buildings scattered across the hillside under a clear sky.

# NOURISHABLE PLACES

[www.originalgreen.org](http://www.originalgreen.org)

# TIGHTLY-EMBEDDED

An aerial photograph of a hillside town. The town is built on a steep slope, with buildings clustered together. In the foreground, there are several terraced vineyards covered in green plastic mulch. A road winds through the town. At the top of the hill, there is a large stone structure, likely a castle or fortress, with a church spire visible. The surrounding landscape is lush and green.

[www.originalgreen.org](http://www.originalgreen.org)

# OPPORTUNISTIC

[www.originalgreen.org](http://www.originalgreen.org)

# SLOPE-ADAPTABLE

An aerial photograph of a coastal town built on a steep, terraced hillside. The town features numerous buildings with red-tiled roofs and is surrounded by lush green vegetation. The hillside is covered in terraced fields, some of which are covered with green plastic mulch. The town is situated on a cliffside overlooking a bright blue ocean. The sky is clear and blue.

[www.originalgreen.org](http://www.originalgreen.org)

# MULTI-LAYERED



[www.originalgreen.org](http://www.originalgreen.org)

# SCALES OF AGRICULTURE



- ★ EMPLOYING FARM
- ★ FAMILY FARM
- ★ ALLOTMENT GARDEN
- ★ EDGE YARD GARDEN
- ★ COURTYARD GARDEN
- ★ ROOF GARDEN
- ★ ARBOR GARDEN
- ★ WALL GARDEN
- ★ BALCONY GARDEN
- ★ WINDOW GARDEN

[www.originalgreen.org](http://www.originalgreen.org)

An aerial photograph of a rural landscape. The terrain consists of rolling hills covered in golden-brown fields, likely harvested crops. Numerous round hay bales are scattered across the fields. A dense line of green trees runs across the middle ground, separating the foreground from the background. The lighting is warm, suggesting late afternoon or early morning. The text 'EMPLOYING FARM' is overlaid in a large, yellow, serif font across the upper portion of the image.

# EMPLOYING FARM

[www.originalgreen.org](http://www.originalgreen.org)

# FAMILY FARM

[www.originalgreen.org](http://www.originalgreen.org)

# ALLOTMENT GARDEN



[www.originalgreen.org](http://www.originalgreen.org)

# EDGE YARD (FRONT YARD) GARDEN



[www.originalgreen.org](http://www.originalgreen.org)

# COURTYARD GARDEN



[www.originalgreen.org](http://www.originalgreen.org)

# ROOF *or* TERRACE GARDEN



[www.originalgreen.org](http://www.originalgreen.org)

# ARBOR GARDEN

[www.originalgreen.org](http://www.originalgreen.org)

A photograph of a wall garden. The garden is a dense thicket of green plants, primarily orange trees, growing against a weathered stone wall. Several bright orange fruits are visible among the leaves. The wall is made of grey and brown stones, with some white patches of plaster or mortar. The overall scene is a lush, vertical garden.

# WALL GARDEN

[www.originalgreen.org](http://www.originalgreen.org)



# BALCONY GARDEN

[www.originalgreen.org](http://www.originalgreen.org)

# WINDOW GARDEN



[www.originalgreen.org](http://www.originalgreen.org)

A photograph of a brick building with green shutters and a window, with a vine-covered trellis above. The scene is set in a courtyard with a brick wall, a window with green shutters, and a doorway with green shutters. A vine-covered trellis arches over the doorway. A small tree in a white pot sits on the brick-paved ground. In the background, a brick wall and a metal railing are visible.

# LOVABLE BUILDINGS

[www.originalgreen.org](http://www.originalgreen.org)



*Habersham  
Community  
Garden*

[www.originalgreen.org](http://www.originalgreen.org)



[www.originalgreen.org](http://www.originalgreen.org)



[www.originalgreen.org](http://www.originalgreen.org)

# THE AGRICULTURAL AESTHETIC

[www.originalgreen.org](http://www.originalgreen.org)

# PLANTS

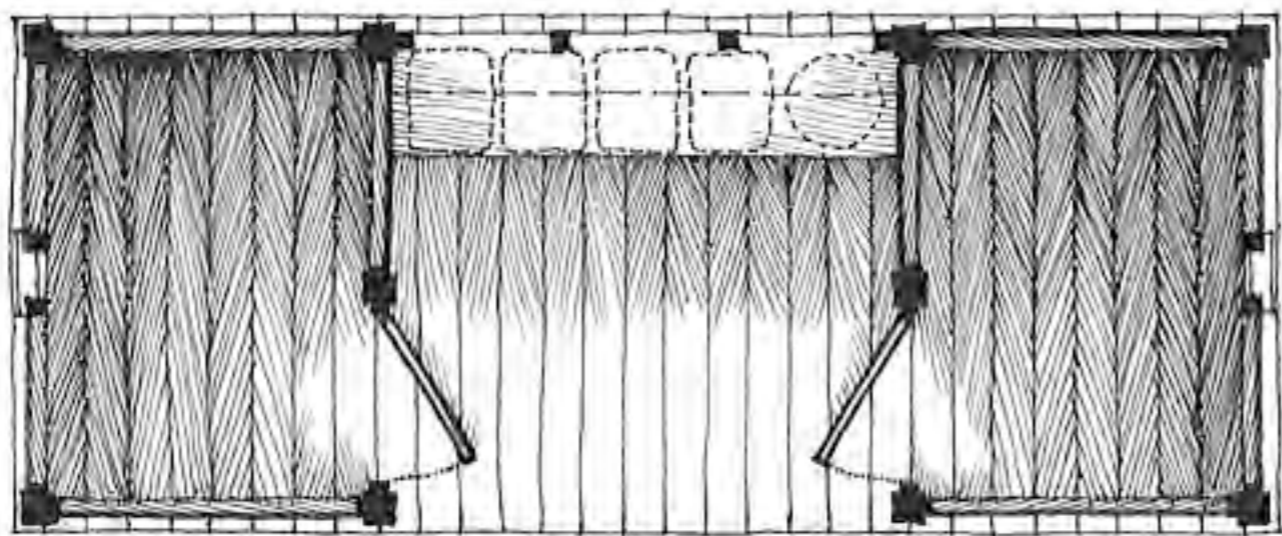
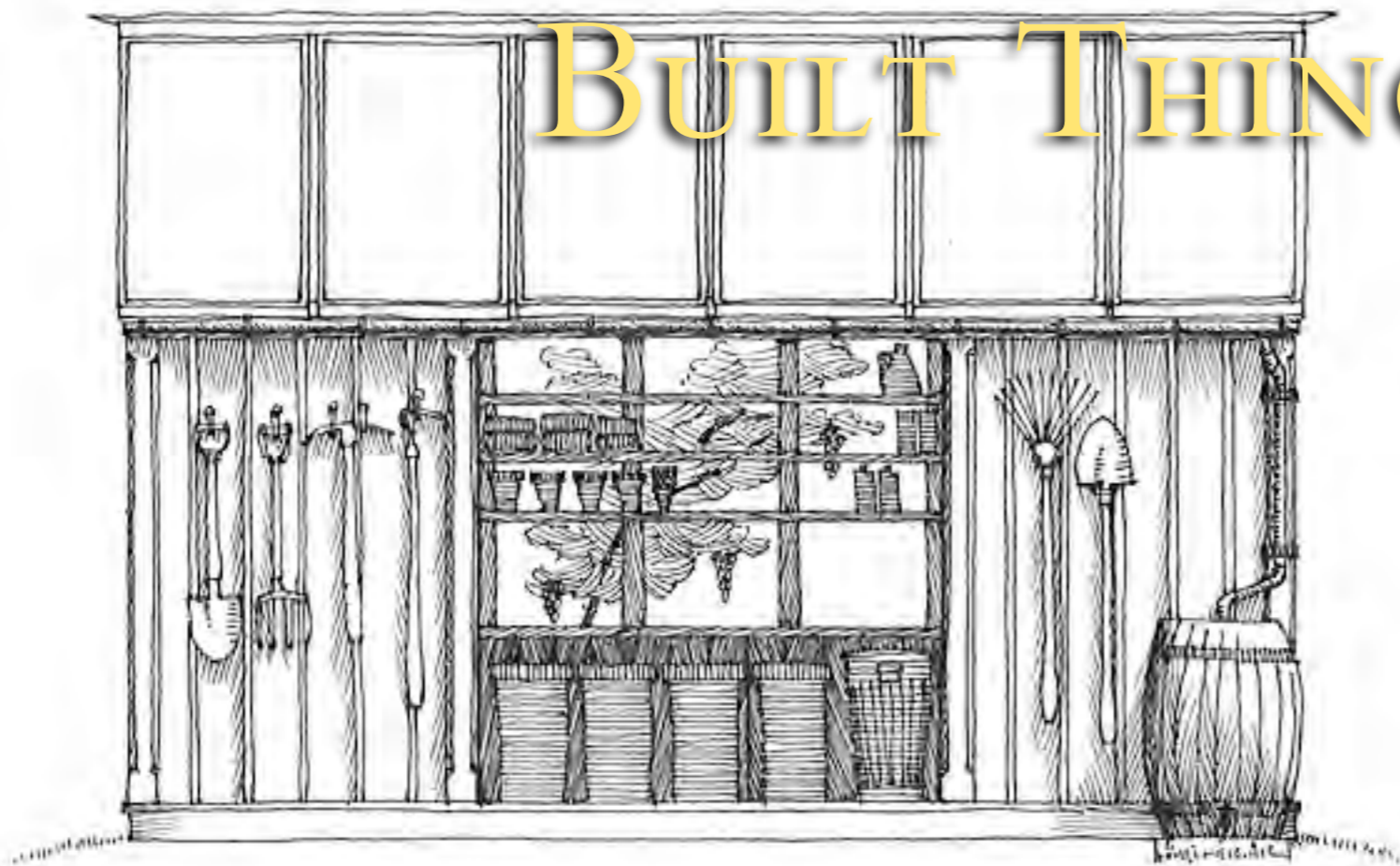
[www.originalgreen.org](http://www.originalgreen.org)

# ANIMALS



[www.originalgreen.org](http://www.originalgreen.org)

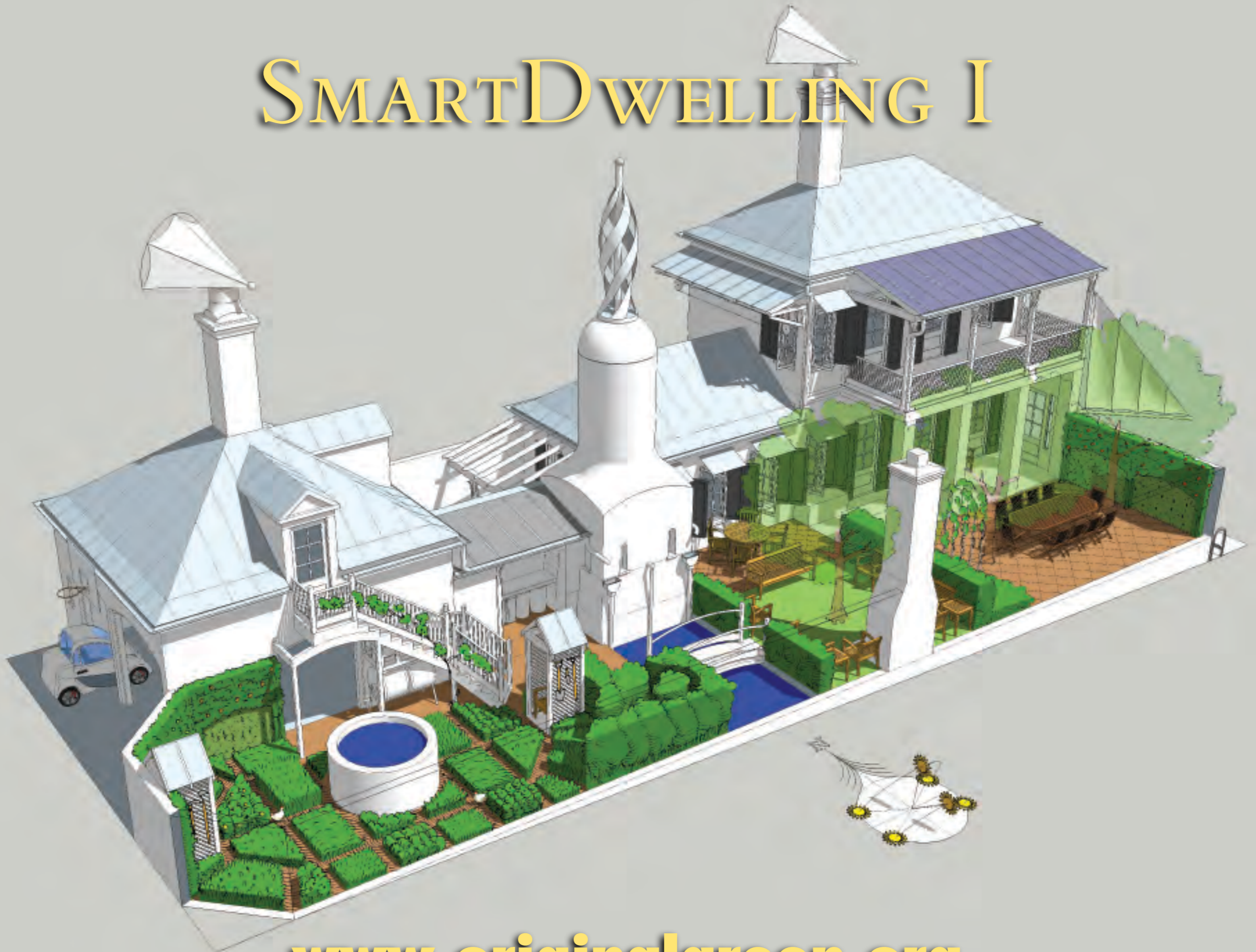
# BUILT THINGS



# PLANTS

[www.originalgreen.org](http://www.originalgreen.org)

# SMART DWELLING I



[www.originalgreen.org](http://www.originalgreen.org)

# SMART DWELLING II



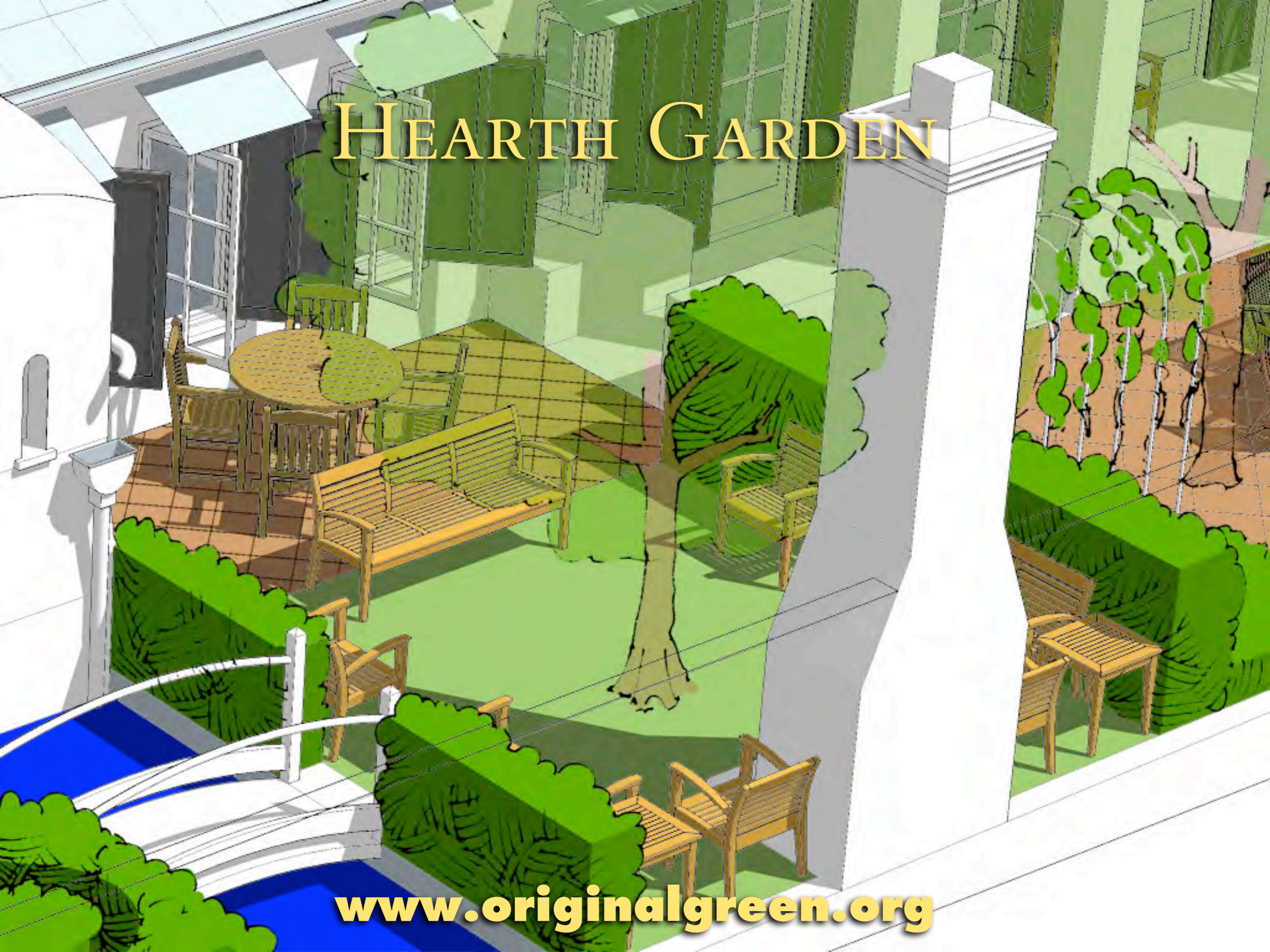
[www.originalgreen.org](http://www.originalgreen.org)

# FOOTPRINT *of the* GARDEN



[www.originalgreen.org](http://www.originalgreen.org)

# HEARTH GARDEN



[www.originalgreen.org](http://www.originalgreen.org)

# KITCHEN GARDEN



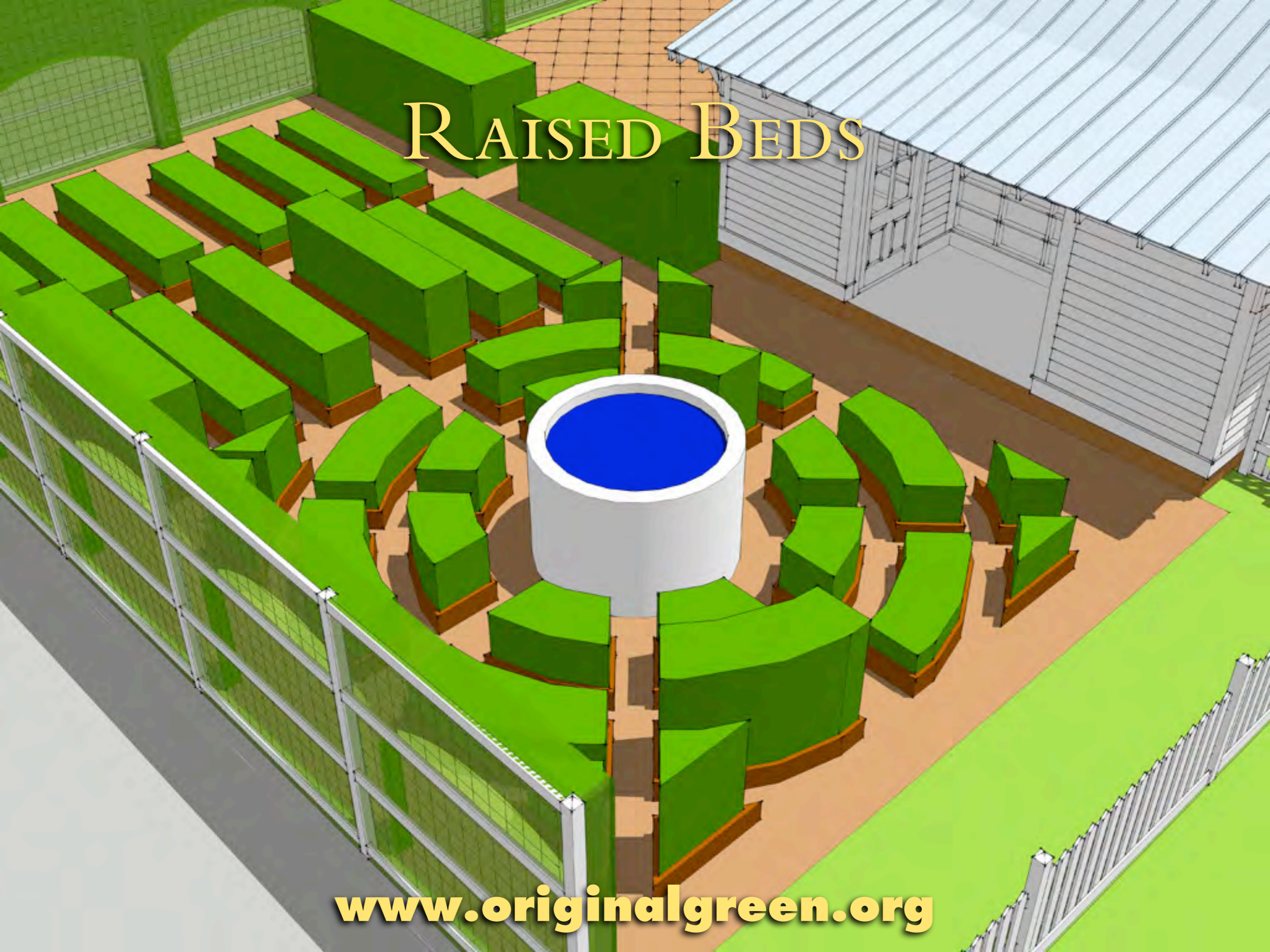
[www.originalgreen.org](http://www.originalgreen.org)

# TOWER of WIND and WATER



[www.originalgreen.org](http://www.originalgreen.org)

# RAISED BEDS



[www.originalgreen.org](http://www.originalgreen.org)

# GREEN FENCE



[www.originalgreen.org](http://www.originalgreen.org)

# GREEN WALL

[www.originalgreen.org](http://www.originalgreen.org)

# ORCHARD SIDNEYARD



[www.originalgreen.org](http://www.originalgreen.org)

# CHICKENS



[www.originalgreen.org](http://www.originalgreen.org)

# WHEAT LAWN



[www.originalgreen.org](http://www.originalgreen.org)

# BLACKBERRY TUNNEL



[www.originalgreen.org](http://www.originalgreen.org)

A 3D architectural rendering of a maze made of green, rectangular blocks. The maze is set on a brown ground plane. In the background, there is a white building with a grid-like facade. The sky is light blue. The maze has several paths and dead ends, with a prominent circular opening in the foreground.

# BLUEBERRY MAZE

[www.originalgreen.org](http://www.originalgreen.org)

# ANIMALS



[www.originalgreen.org](http://www.originalgreen.org)



[www.originalgreen.org](http://www.originalgreen.org)



[www.originalgreen.org](http://www.originalgreen.org)



[www.originalgreen.org](http://www.originalgreen.org)



[www.originalgreen.org](http://www.originalgreen.org)



[www.originalgreen.org](http://www.originalgreen.org)



[www.originalgreen.org](http://www.originalgreen.org)



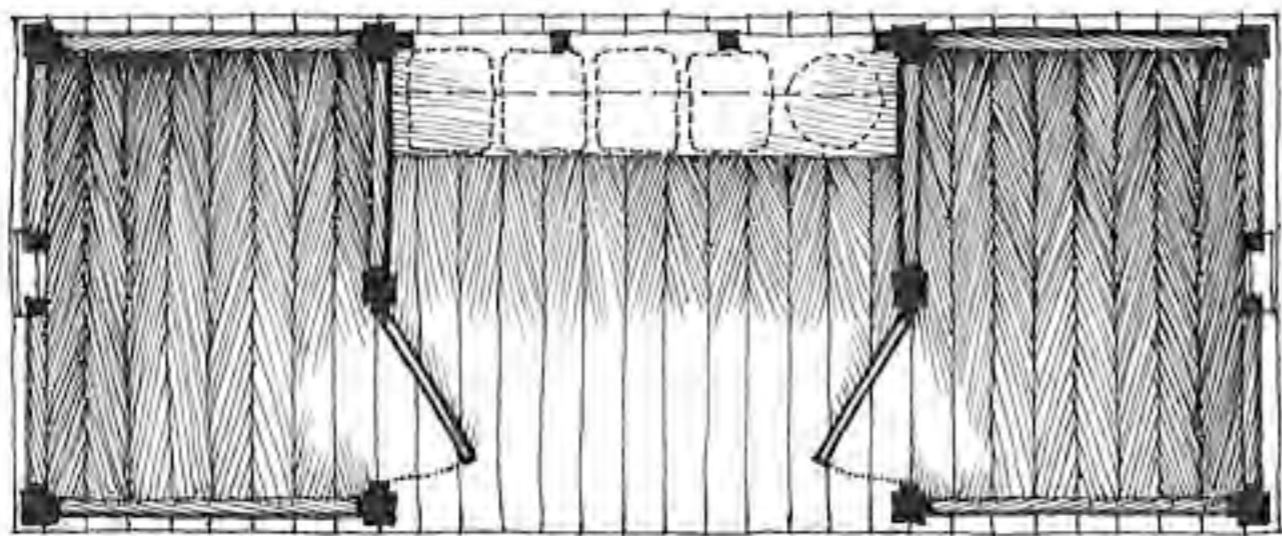
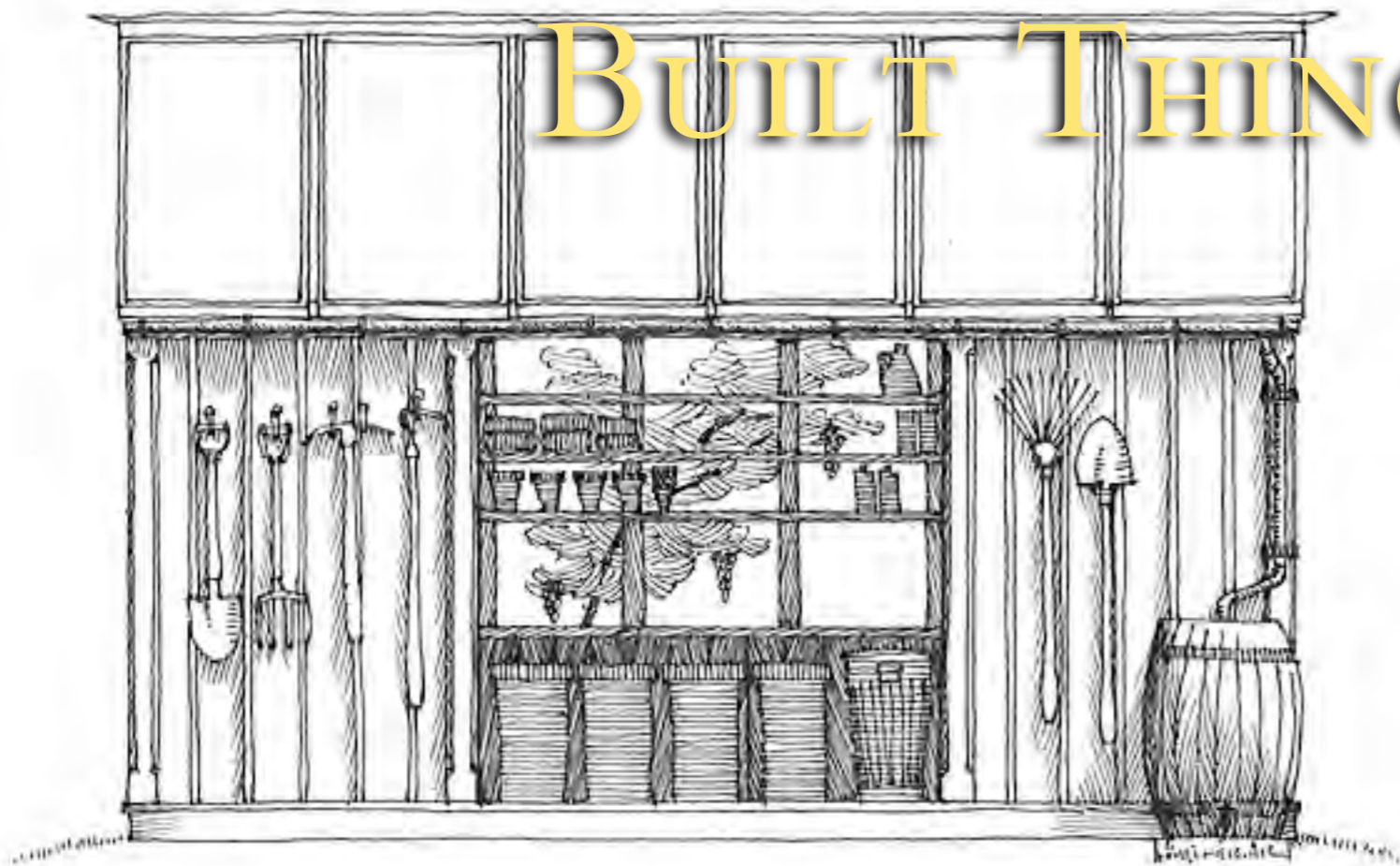
[www.originalgreen.org](http://www.originalgreen.org)



# TILAPIA TANK

[www.originalgreen.org](http://www.originalgreen.org)

# BUILT THINGS





[www.originalgreen.org](http://www.originalgreen.org)



[www.originalgreen.org](http://www.originalgreen.org)

A 3D architectural rendering of a multi-level chicken coop. The structure is primarily grey and white. It features a central staircase with a white handrail and vertical balusters. To the left, there is a large arched opening leading to a dark interior. In the foreground, a white cylindrical composting bin is mounted on a metal stand. The ground is brown, and there are green rectangular blocks in the lower right corner. The title 'CHICKENS and COMPOST' is overlaid in yellow text at the top.

# CHICKENS *and* COMPOST

[www.originalgreen.org](http://www.originalgreen.org)



# MORNING PAVILION

[www.originalgreen.org](http://www.originalgreen.org)



[www.originalgreen.org](http://www.originalgreen.org)



[www.originalgreen.org](http://www.originalgreen.org)



[www.originalgreen.org](http://www.originalgreen.org)



[www.originalgreen.org](http://www.originalgreen.org)



[www.originalgreen.org](http://www.originalgreen.org)

# FARMER'S MARKET



[www.originalgreen.org](http://www.originalgreen.org)

# AGRICULTURAL PRECINCT

★ AGRICULTURAL INSTITUTE

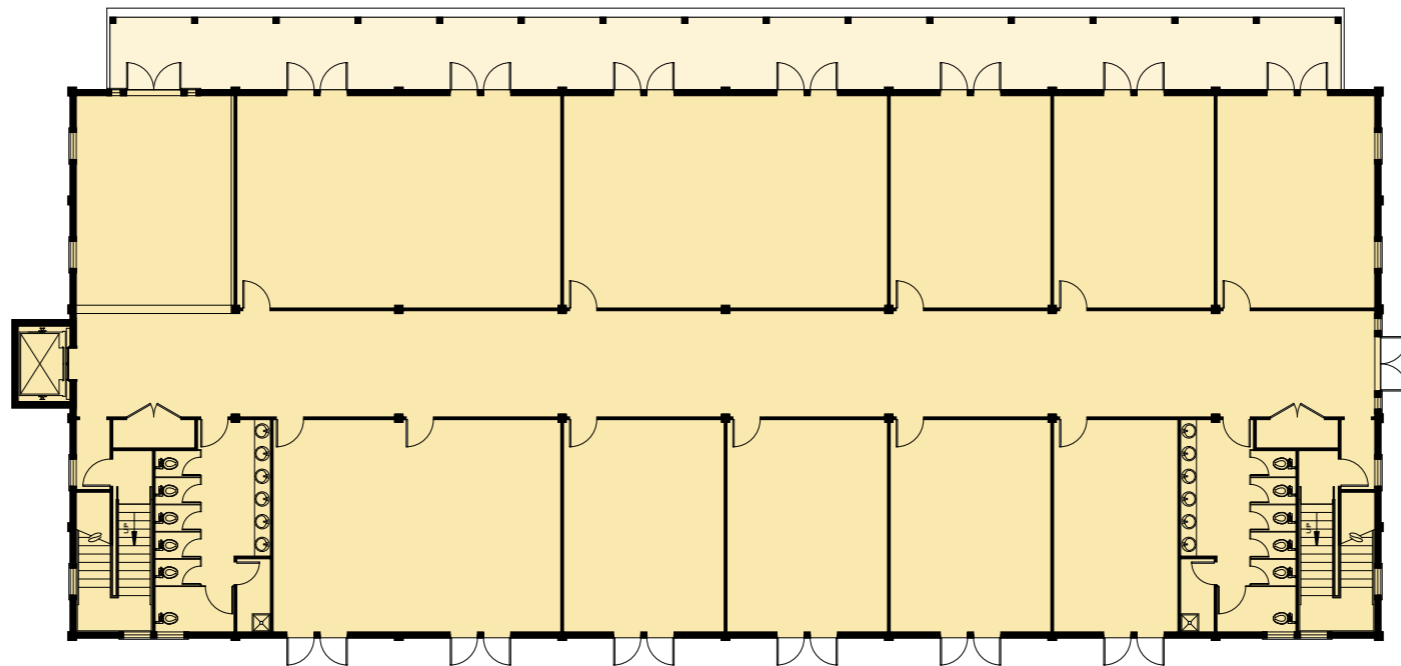
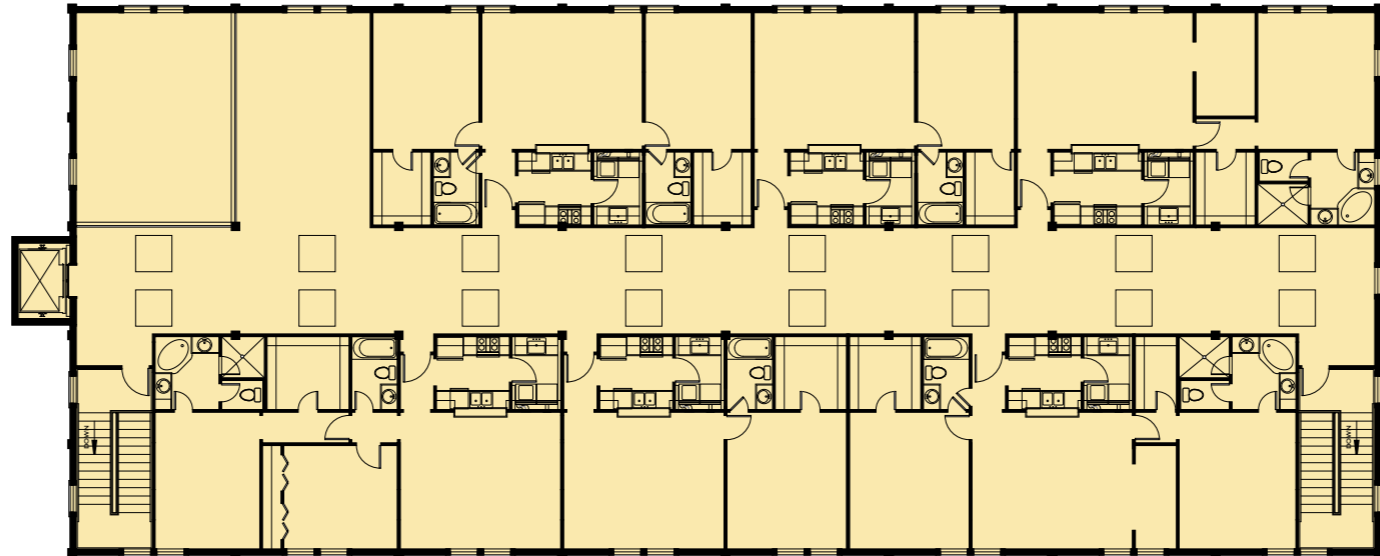
★ CULINARY SCHOOL

★ RESTAURANT

★ FARMERS' MARKET

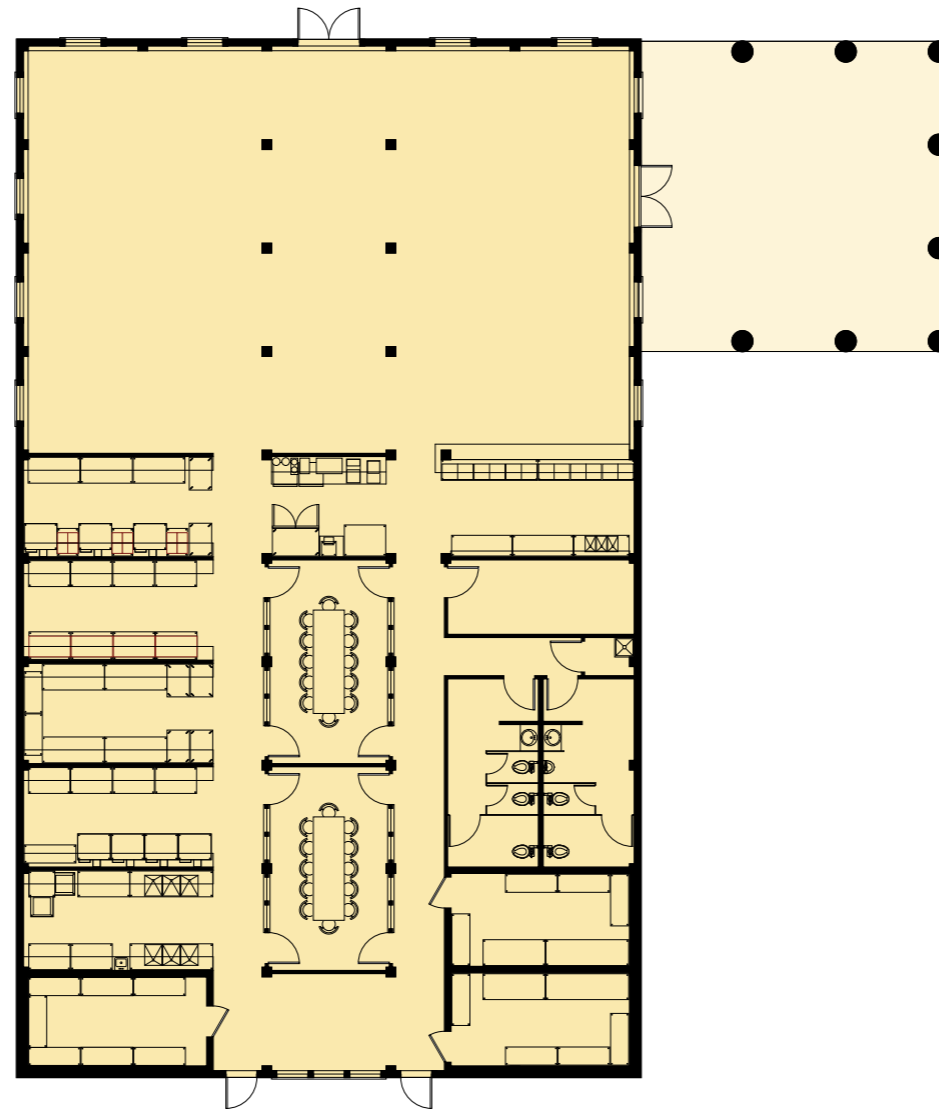
★ COTTAGE INDUSTRIES

# AGRICULTURAL INSTITUTE



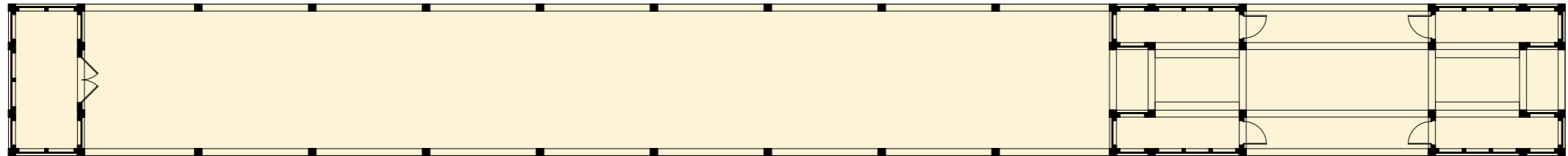
[www.originalgreen.org](http://www.originalgreen.org)

# CULINARY SCHOOL & RESTAURANT



[www.originalgreen.org](http://www.originalgreen.org)

# FARMERS' MARKET





*the*

**Original**

**G R E E N**

**[www.originalgreen.org](http://www.originalgreen.org)**