

THE ORIGINAL GREEN



CNU CASCADIA

Portland

11 March 26

STEPHEN A. MOUZON, AIA CNU LEED

THE NEW URBAN GUILD

Miami Beach, Florida, USA

COMPACT



MIXED-USE



WALKABLE



RE-USE





HOW THINGS OPERATE

A large, rusted industrial machine, possibly a steam engine or turbine, is the central focus of the image. The machine is made of dark, weathered metal and features a large, curved, segmented structure. In the foreground, a chain-link fence runs across the frame, partially obscuring the machine. The background shows a dimly lit industrial interior with various pipes, structural beams, and a brick wall. The overall atmosphere is gritty and industrial.

www.originalgreen.org

LOTS of CONTROLS



www.originalgreen.org

PRECISION ALIGNMENTS



www.originalgreen.org

MASSIVE USE of ENERGY

A photograph of a large industrial machine, possibly a steam engine or a large-scale pump. The machine features a prominent brown cylindrical tank at the bottom, which is riveted and has a vertical support beam. Above the tank is a complex network of green pipes and yellow structural beams. The background shows a dark, industrial interior with a metal grate or screen.

www.originalgreen.org

HOW THINGS GROW



www.originalgreen.org

THINGS *that have* LIFE



www.originalgreen.org



WHERE THEY *can* THRIVE

www.originalgreen.org

HOW WE GET THERE

www.originalgreen.org

HOW WE PARTICIPATE

www.originalgreen.org

MICRON

the ORIGINAL GREEN UNLOCKING *the* MYSTERY of TRUE SUSTAINABILITY

the
**ORIGINAL
GREEN**

UNLOCKING *the* MYSTERY of TRUE SUSTAINABILITY

STEPHEN A. MOUZON
*The Guild Foundation Press
Miami*

Foreword by
ROBERT F. KENNEDY, JR.

NEW
GREEN
GUILD
FOUNDATION

UNIVERSITY
OF
FLORIDA
PRESS

ROBERT F. KENNEDY, JR.
Foreword by

WHAT'S *the* PROBLEM?

10. *the* ABSENCE of PLAIN-
SPOKEN SUSTAINABILITY

9. *the* DANGER of WISHES

8. *the* DILEMMA of GLOBAL
WARMING

7. *the* FATE of "OUGHT-TO"

6. *the* PROBLEM of GROWTH

5. *the* TROUBLE with
CONSUMPTION

4. *the* ACHILLES HEEL of
ARCHITECTURE

3. *the* CARBON FOCUS

2. *the* SUPPLY-SIDE FOCUS

1. *the* 2.5 BILLION PEOPLE

A photograph of a traditional stone building under construction in a lush, green rural setting. The building's walls are made of rough-hewn stones and bricks, with several vertical wooden posts protruding from the structure. In the foreground, a complex scaffolding of thin bamboo poles is erected, supporting the construction process. The surrounding area is filled with dense green vegetation, including trees and bushes, suggesting a rural or agricultural environment. The overall scene conveys a sense of traditional craftsmanship and sustainable building practices.

10. *the* ABSENCE
of PLAIN-SPOKEN SUSTAINABILITY

www.originalgreen.org

The background of the slide is a photograph of an industrial facility, likely a power plant or refinery, during sunset or sunrise. The sky is a deep orange and yellow, with a large plume of white smoke or steam rising from a central smokestack. Other industrial structures, including pipes and scaffolding, are visible in silhouette against the bright sky. The overall mood is one of environmental impact and industrial activity.

9. *the* DANGER *of* WISHES

www.originalgreen.org

An aerial photograph of a mountain range with several snow patches. The mountains are dark green and brown, with snow patches scattered across the peaks and ridges. The text is overlaid on the top half of the image.

8. *the* DILEMMA
of GLOBAL WARMING

www.originalgreen.org

7. *the* FATE of “OUGHT-TO”



6. *the* PROBLEM OF GROWTH





5. *the* TROUBLE
with CONSUMPTION

www.originalgreen.org

PLANNED OBSOLESCENCE



www.originalgreen.org

THROWAWAY BUILDINGS



www.originalgreen.org

THROWAWAY PLACES



www.originalgreen.org

A large, modern concrete building at dusk. The building features a prominent entrance with a wide set of stairs and a covered walkway. The windows are illuminated from within, casting a warm glow. The sky is a deep blue, and the overall atmosphere is one of architectural grandeur.

4. *the* ACHILLES HEEL
of ARCHITECTURE

www.originalgreen.org

the NECESSITY *of*
UNIQUENESS

www.originalgreen.org

the ENORMOUS EFFORT
to FIGURE IT OUT

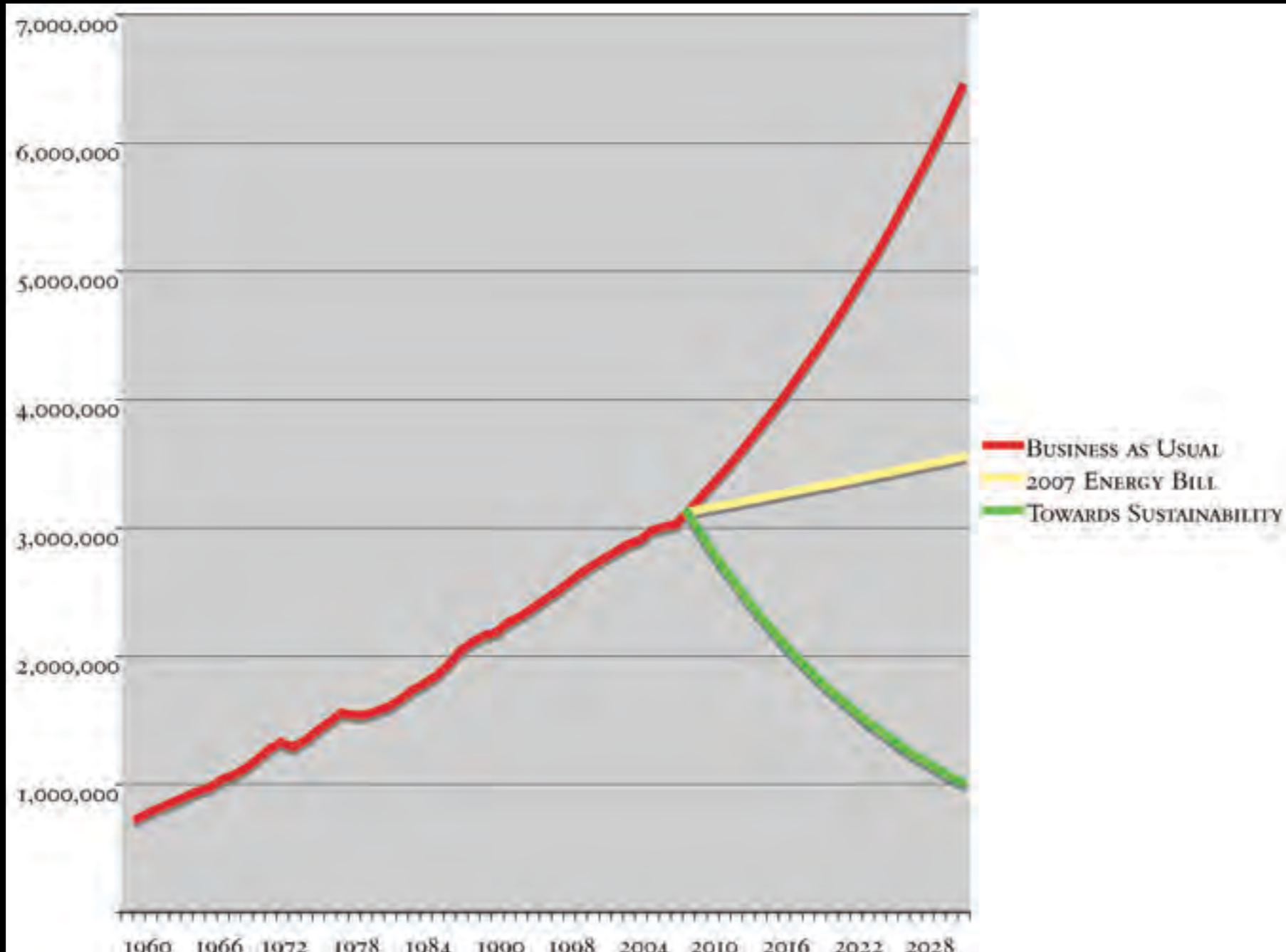
www.originalgreen.org

An aerial photograph showing a multi-lane highway interchange. A large, multi-story building with a flat roof and a parking lot is situated on the right side of the highway. The surrounding area includes green fields and some industrial or commercial buildings in the distance. The text '3. the CARBON FOCUS' is overlaid in a yellow, serif font across the top of the image.

3. *the* CARBON FOCUS

www.originalgreen.org

2. *the* SUPPLY-SIDE FOCUS



1. *the* 2.5 BILLION PEOPLE

www.originalgreen.org

WHAT CAN WE DO?

10. *the THINGS that WORK*

9. *the DIVERSIFIED EXTENT*

8. *the DIVERSIFIED ENVIRONMENT*

7. *the DIVERSIFIED MEANS*

6. *the EXPANDED USES*

5. *the NARROWED RESOURCE RANGE*

4. *the EXPANDED COMFORT RANGE*

3. *the LOCALIZED OPERATIONS*

2. *the SHARING of WISDOM*

1. *the INVOLVEMENT of EVERYONE*

www.originalgreen.org



10. *the THINGS that WORK*

www.originalgreen.org

9. *the* DIVERSIFIED EXTENT

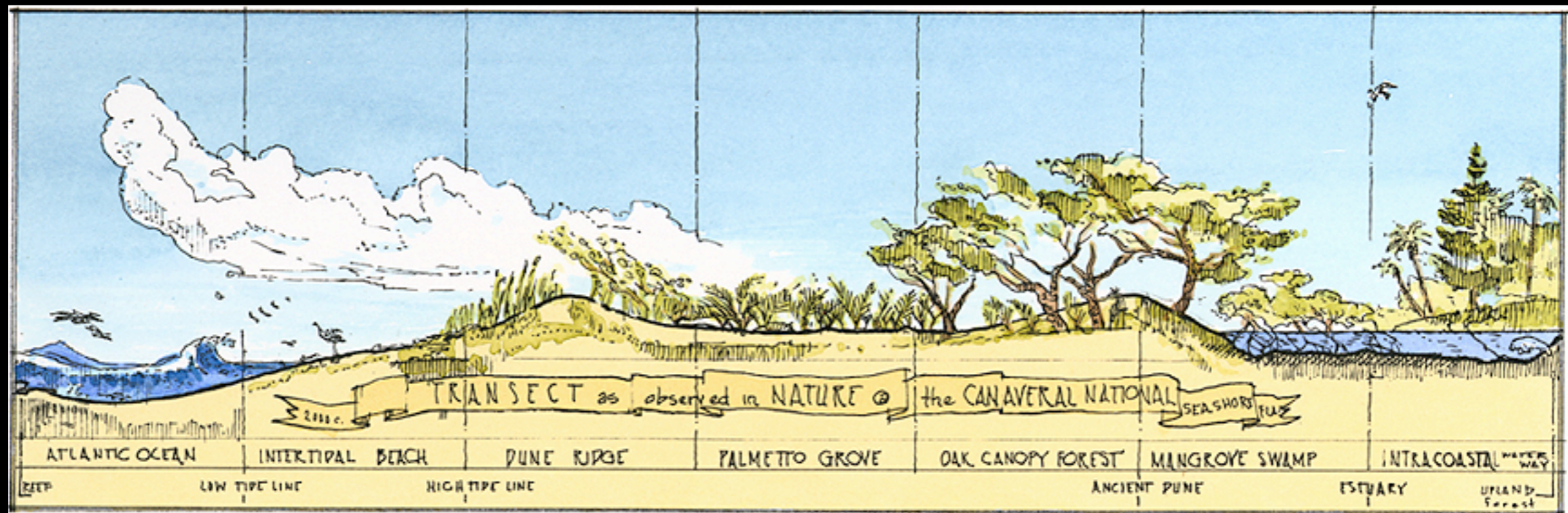


www.originalgreen.org

8. *the* DIVERSIFIED ENVIRONMENT

The Transect is the operating system of the New Urbanism.

The idea of the Transect originated in the 1900's as an ecological tool used to describe a series of natural habitats, but transects have existed in nature since the dawn of time.



the TRANSECT



- ★ T1: NATURAL (THE WILDERNESS)
- ★ T2: RURAL (FIELDS & MEADOWS)
- ★ T3: SUBURBAN (THE OUTSKIRTS)
- ★ T4: GENERAL URBAN (NEIGHBORHOODS)
- ★ T5: URBAN CENTER (MAIN STREET)
- ★ T6: URBAN CORE (DOWNTOWN)



7. *the* DIVERSIFIED MEANS

www.originalgreen.org

V

VERNACULAR



M

MEDIAN



C

CLASSICAL



MORE ORGANIC

MORE REFINED

www.originalgreen.org

6. *the* EXPANDED USES



www.originalgreen.org

5. *the* NARROWED
RESOURCE RANGE



www.originalgreen.org

A night scene of a busy street market. The street is paved with cobblestones and lined with shops. On the left, a restaurant named 'TABERNA to XANI' has outdoor seating with tables and chairs. People are walking along the street, some looking at goods. On the right, there are racks of clothing hanging from the buildings. The scene is illuminated by warm streetlights and shop lights, creating a vibrant atmosphere.

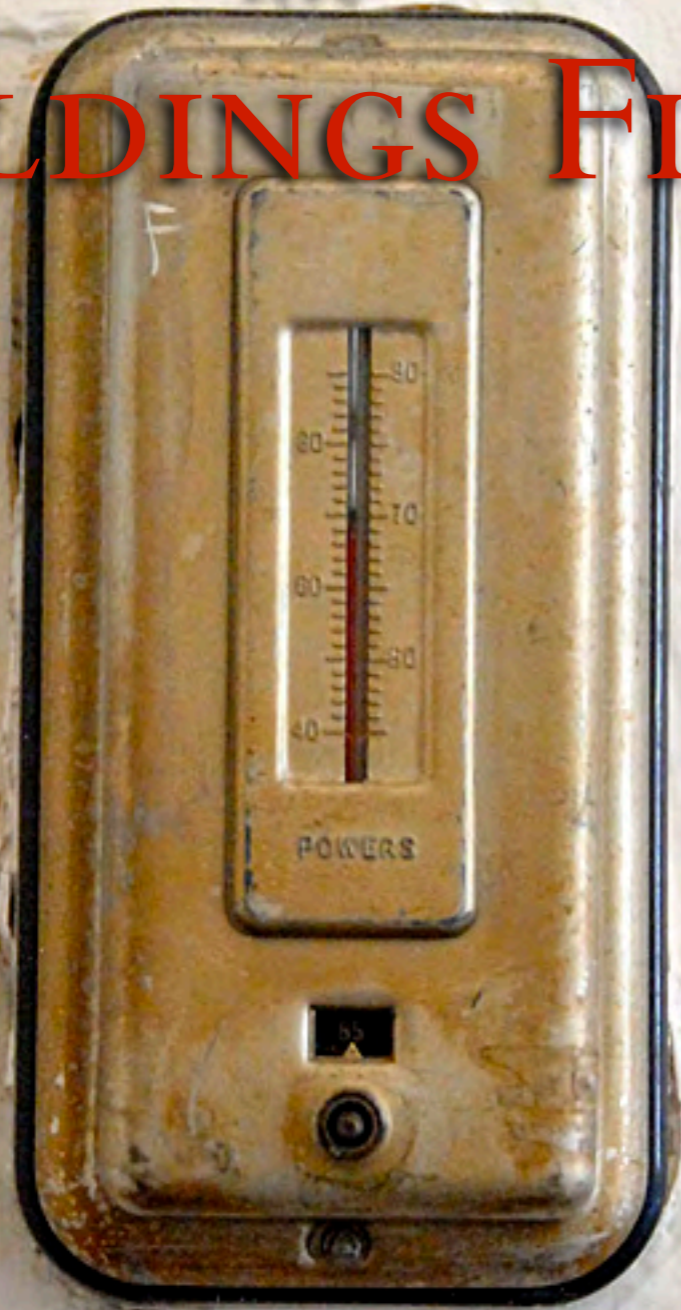
4. *the* EXPANDED
COMFORT RANGE

www.originalgreen.org

CONDITIONING

the

BUILDINGS FIRST



CONDITIONING

THE

HUMANS FIRST



www.originalgreen.org

LIVING *in* SEASON



www.originalgreen.org

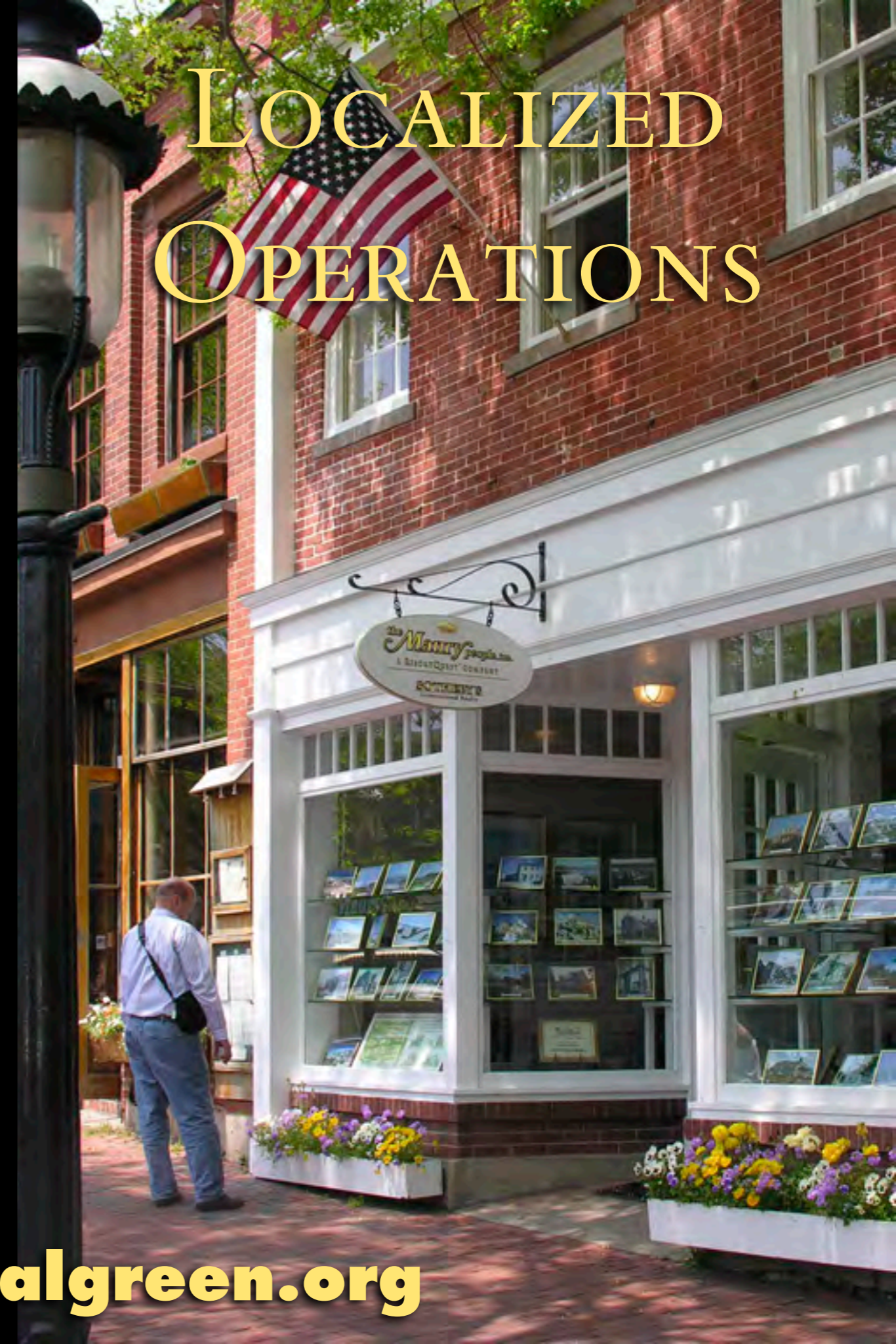
3. *the* LOCALIZED OPERATIONS



LARGE-SCALE WAFFLE HOUSE OPERATIONS



LOCALIZED OPERATIONS



www.originalgreen.org

WEB of DAILY LIFE

An aerial photograph of a city, likely San Francisco, showing a dense urban grid and a large body of water. A yellow line connects two points on the city grid: 'Home' and 'Office'. The 'Home' marker is located in the central part of the city, and the 'Office' marker is located further east, closer to the waterfront. The water is a deep blue-green color, and the city buildings are a mix of grey and brown tones.

Office ●

Home ●

www.originalgreen.org



www.originalgreen.org



www.originalgreen.org



Doctor

www.originalgreen.org



Accountant ●

www.originalgreen.org



www.originalgreen.org



Vitamins

www.originalgreen.org



Groceries ●



Groceries



www.originalgreen.org



Bookstore

www.originalgreen.org



Apple Store

www.originalgreen.org



Restaurants



www.originalgreen.org



www.originalgreen.org



www.originalgreen.org



www.originalgreen.org



www.originalgreen.org



www.originalgreen.org



www.originalgreen.org

WEB OF DAILY LIFE



www.originalgreen.org

2. *the* SHARING of WISDOM

www.originalgreen.org

WHAT'S THE DELIVERY SYSTEM?

★ PUBLIC EDUCATION'S WAY

★ HIGHER EDUCATION'S WAY

★ *the* SPECIALISTS' WAY

★ NATURE'S WAY

www.originalgreen.org

PUBLIC EDUCATION'S WAY

PUBLIC LIBRARY

www.originalgreen.org

HIGHER EDUCATION'S WAY

www.originalgreen.org



the SPECIALISTS' WAY

www.originalgreen.org

NATURE'S WAY

www.originalgreen.org



www.originalgreen.org

I. *the* INVOLVEMENT of EVERYONE



www.originalgreen.org

WHAT IS A LIVING TRADITION?

★ INSPIRATION

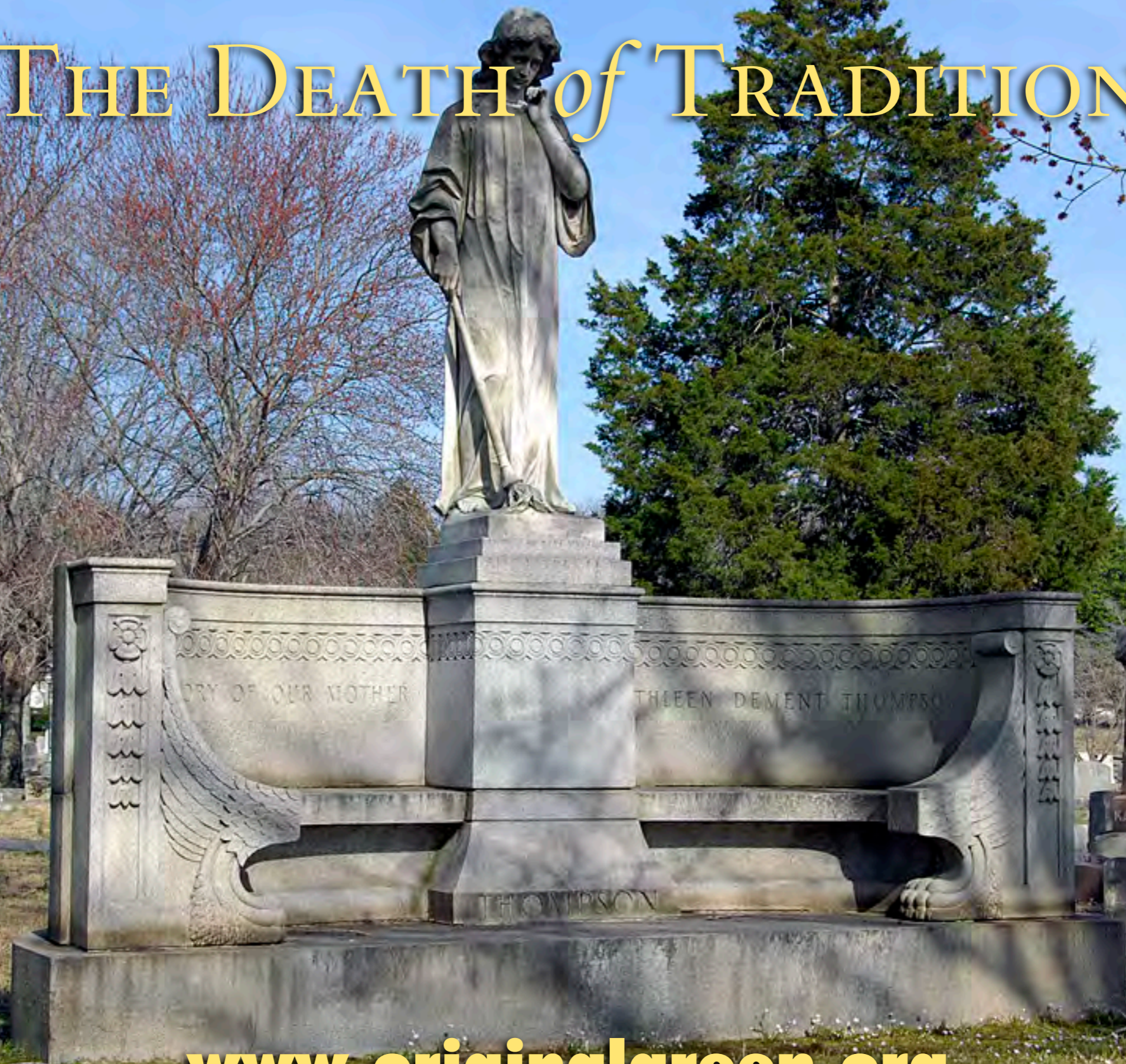
★ RESONANCE

★ REPETITION

★ ADOPTION

www.originalgreen.org

THE DEATH *of* TRADITION



www.originalgreen.org



www.originalgreen.org

THE GREAT DECLINE

1925-1945

www.originalgreen.org



www.originalgreen.org



THE DARK AGES OF ARCHITECTURE

1945-1980

www.originalgreen.org



www.originalgreen.org

THE NEW RENAISSANCE



★ FIRST PHASE: 1980-2005

★ SECOND PHASE: 2006-?

★ THIRD PHASE: ?-

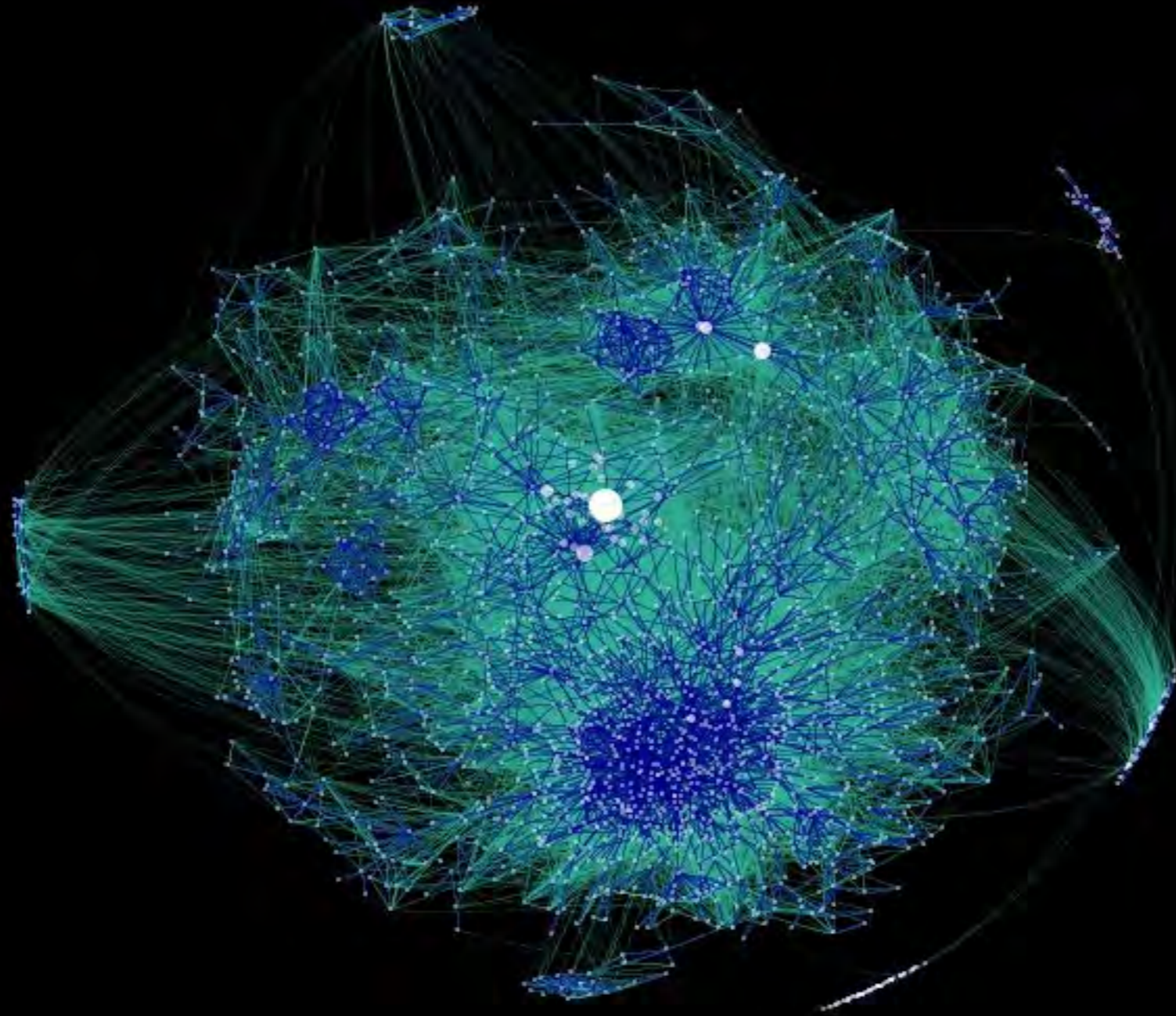
www.originalgreen.org

WORKINGS *of a* LIVING TRADITION

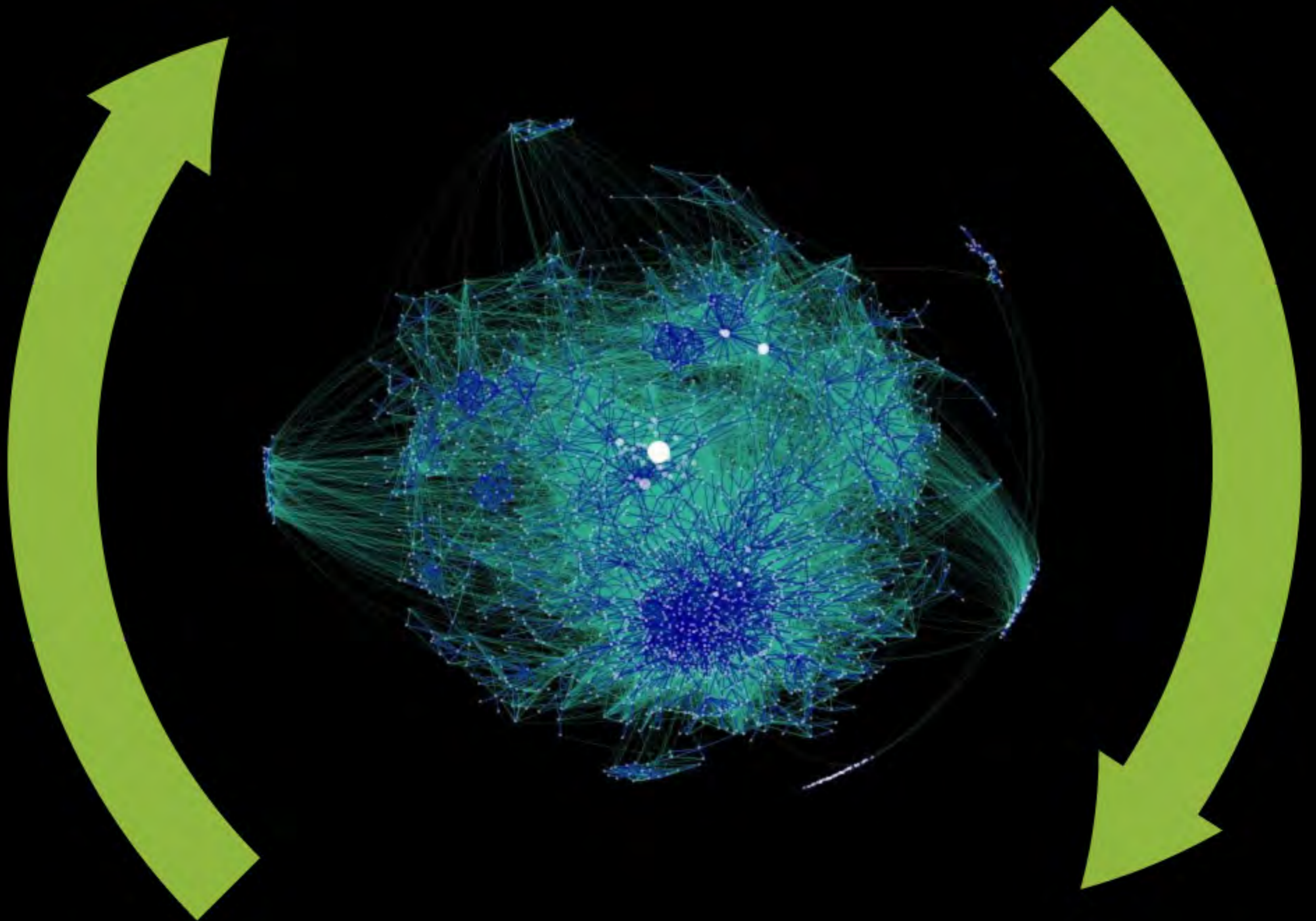
- ★ EASILY PERCEIVED
- ★ EASILY LOVED
- ★ EASILY PERFORMED
- ★ ... BY THE PEOPLE, NOT JUST THE SPECIALISTS

www.originalgreen.org

IMAGE SOURCE: [HTTP://MSA4.WORDPRESS.COM](http://msa4.wordpress.com)



www.originalgreen.org



www.originalgreen.org



GIZMO GREEN

www.originalgreen.org



www.originalgreen.org

“THIS IS HOW WE BUILD
HERE”

www.originalgreen.org



ARCHITECTURE'S BIOMIMICRY

www.originalgreen.org

THAT WHICH CAN REPRODUCE AND LIVE
SUSTAINABLY IS GREEN; THAT WHICH IS
INCAPABLE OF DOING SO IS NOT GREEN.

THIS IS THE STANDARD OF LIFE.

LIFE IS THAT PROCESS WHICH CREATES
ALL THINGS GREEN.

www.originalgreen.org

WHAT IS *the* ORIGINAL GREEN?

www.originalgreen.org

KEEPING THINGS GOING MEANS HEALING, NOT TRASHING



www.originalgreen.org

THE ORIGINAL GREEN

S NOURISHABLE L O V A B L E **S**

E ACCESSIBLE D U R A B L E **G**

A SERVICEABLE F L E X I B L E **N**

L SECURABLE F R U G A L **I**

R **B**

An aerial photograph of a hillside town. The foreground is dominated by terraced vineyards with stone walls. The middle ground shows a cluster of buildings, including a prominent large stone tower with a central archway. The background shows more buildings on the hillside under a clear sky.

NOURISHABLE PLACES

www.originalgreen.org

TIGHTLY-EMBEDDED

An aerial photograph of a hillside town, likely in Italy, showing terraced vineyards with green netting, a castle on a hilltop, and various buildings. The text 'TIGHTLY-EMBEDDED' is overlaid in a large, yellow, serif font at the top.

www.originalgreen.org

OPPORTUNISTIC

www.originalgreen.org

SLOPE-ADAPTABLE

An aerial photograph of a coastal town built on a steep, terraced hillside. The town features numerous buildings with red-tiled roofs and is surrounded by lush green vegetation. The hillside is covered in terraced fields, some of which are covered with green netting. The town is situated on a cliffside overlooking a bright blue ocean. The sky is clear and blue.

www.originalgreen.org

MULTI-LAYERED



www.originalgreen.org

SCALES OF AGRICULTURE

- ★ EMPLOYING FARM
- ★ FAMILY FARM
- ★ ALLOTMENT GARDEN
- ★ EDGE YARD GARDEN
- ★ COURTYARD GARDEN
- ★ ROOF GARDEN
- ★ ARBOR GARDEN
- ★ WALL GARDEN
- ★ BALCONY GARDEN
- ★ WINDOW GARDEN

www.originalgreen.org

An aerial photograph of a rural landscape. The terrain consists of rolling hills covered in golden-brown fields, likely harvested crops. Numerous round hay bales are scattered across the fields. A dense line of green trees runs across the middle ground, separating the foreground from the background. The lighting suggests a late afternoon or early morning setting, with long shadows and warm tones. The text 'EMPLOYING FARM' is overlaid in a large, yellow, serif font across the upper portion of the image.

EMPLOYING FARM

www.originalgreen.org

FAMILY FARM

www.originalgreen.org

ALLOTMENT GARDEN



www.originalgreen.org

EDGE YARD (FRONT YARD) GARDEN



www.originalgreen.org

COURTYARD GARDEN

www.originalgreen.org

ROOF *or* TERRACE GARDEN



www.originalgreen.org

ARBOR GARDEN

www.originalgreen.org

A photograph of a wall garden. A stone wall is covered with several orange trees trained against it. The trees are lush green and bear several ripe, orange fruits. The text "WALL GARDEN" is overlaid in a gold, serif font across the top center of the image. At the bottom center, the website address "www.originalgreen.org" is displayed in a bold, gold, sans-serif font.

WALL GARDEN

www.originalgreen.org



BALCONY GARDEN

www.originalgreen.org

WINDOW GARDEN



www.originalgreen.org

FARMER'S MARKET



www.originalgreen.org

ACCESSIBLE PLACES

www.originalgreen.org



www.originalgreen.org



www.originalgreen.org

WALKABILITY: ALLEYS



www.originalgreen.org

WALKABILITY: FRONTAGES

www.originalgreen.org

WALKABILITY: PORCHES



www.originalgreen.org

SERVICEABLE PLACES



www.originalgreen.org

REDUCING PROPERTY VALUES *of the* ADJACENT HOMES



www.originalgreen.org

AFFORDABILITY: COTTAGES



www.originalgreen.org



**AFFORDABILITY:
REAR LANE ADDRESSES**

www.originalgreen.org

AFFORDABILITY: MEWS

www.originalgreen.org

SECURABLE PLACES



www.originalgreen.org

SW 140 CT

www.originalgreen.org



www.originalgreen.org



www.originalgreen.org



www.originalgreen.org



www.originalgreen.org



www.originalgreen.org



www.originalgreen.org



← Pg. Lluís Companys
Arc de Triomf
Arc de Triomf

Pl. Sant Cugat
Av. Francesc Cambó
Mural de Sant Jordi

www.originalgreen.org



LOVABLE BUILDINGS

www.originalgreen.org

BEAUTY *or* LOVABILITY?

www.originalgreen.org



www.originalgreen.org



www.originalgreen.org

BEAUTY *or* LOVABILITY?

★ ADMIRATION

★ ACTION

★ BREADTH



www.originalgreen.org

THREE SOURCES *of* LOVABILITY

★ THINGS *that* REFLECT US

★ THINGS *that* DELIGHT US

★ THINGS *that* PUT US *in* HARMONY

THINGS *that* REFLECT US

- ★ REFLECTING *the* HUMAN FORM
- ★ REFLECTING *the* CULTURE OF OUR GROUPS
- ★ REFLECTING *the* CULTURE OF OUR REGION
- ★ REFLECTING *the* CULTURE OF OUR NATION

THINGS *that* DELIGHT US

- ★ SENSUAL
- ★ GROUP
- ★ MEMORY
- ★ INTELLECTUAL
- ★ SHELTERING
- ★ CHALLENGING

www.originalgreen.org

THINGS *that* PUT US *in* HARMONY

- ★ MATHEMATICAL
- ★ SIMPLICITY
- ★ AUTHENTICITY
- ★ NATURAL PROCESSES
- ★ NATURAL LAWS
- ★ NATURAL FORMS
- ★ HARMONY *with the* REGION

www.originalgreen.org

DURABLE BUILDINGS

www.originalgreen.org



www.originalgreen.org

UNNATURALLY
USED
MATERIALS

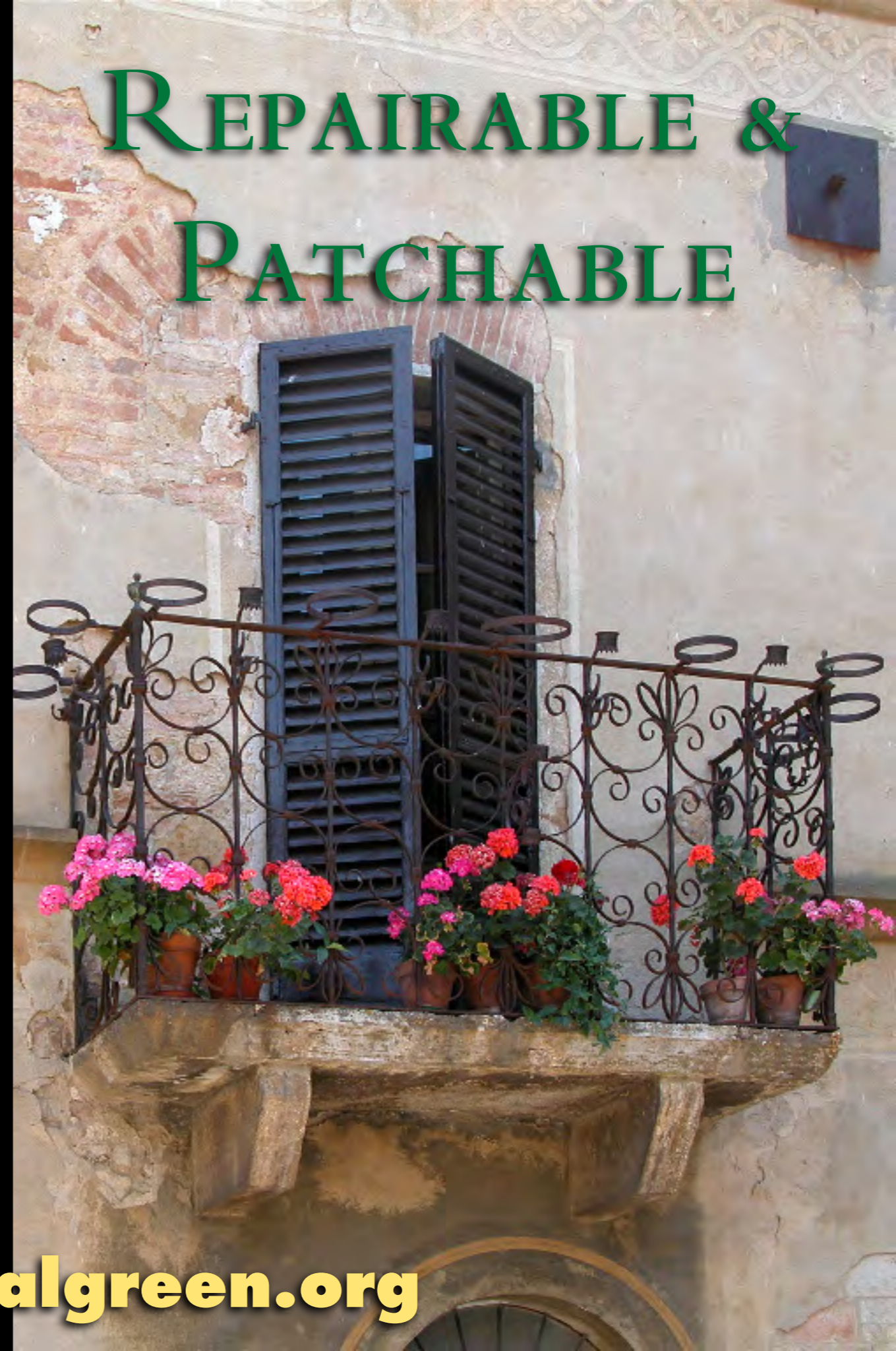
NATURALLY
USED
MATERIALS

www.originalgreen.org

“No
MAINTENANCE”



REPAIRABLE &
PATCHABLE



www.originalgreen.org

FLEXIBLE BUILDINGS

BANANA REPUBLIC



www.originalgreen.org

PROXIMITY TO STREET



www.originalgreen.org

CEILING HEIGHT



www.originalgreen.org

SIMPLICITY OF MASSING



www.originalgreen.org

SIMPLICITY OF CIRCULATION

(???)

www.originalgreen.org

PIPES

www.originalgreen.org

FRUGAL BUILDINGS

www.originalgreen.org

SUSTAINABILITY *and the* MELTDOWN



www.originalgreen.org



BE FRUGAL FIRST

www.originalgreen.org

THEN BRIDGE THE GAP



www.originalgreen.org

PUTTING BUILDINGS

BACK *to* WORK



www.originalgreen.org

THE ORIGINAL GREEN

**S
E
C
A
R
E**

NOURISHABLE LOVABLE

ORGANIC
FARMING

NU:
CODES

LIVING
TRADITIONS

ACCESSIBLE DURABLE

NU:
COMPACT & WALKABLE

LIVING
TRADITIONS

SERVICEABLE FLEXIBLE

NU:
DIVERSE

LIVING
TRADITIONS

SECURABLE FRUGAL

NU:
IDENTITY

LIVING
TRADITIONS

GIZMO
GREEN

**S
G
I
N
G
I
N
G
B
U
I
L
D
I
N
G**

LENSES

- ★ VALUE
- ★ MEANING
- ★ DELIGHT
- ★ WELLNESS
- ★ CONNECTEDNESS

WELLNESS

★ BODY

★ MIND

★ SPIRIT

WELLNESS *of* BODY

- ★ DISTINCTION BETWEEN WELLNESS & FITNESS
- ★ WHAT WE DO WITH OUR BODIES
- ★ WHAT WE PUT INTO OUR BODIES
- ★ WHERE WE PUT OUR BODIES (*in HARM'S WAY?*)

www.originalgreen.org

WELLNESS *of* MIND

★ DISTINCTION BETWEEN WELLNESS & FITNESS

★ COMMUNITY

★ BALANCE

★ NATURE

★ LOVE

www.originalgreen.org

COMMUNITY



www.originalgreen.org

BALANCE



www.originalgreen.org

NATURE

www.originalgreen.org



LOVE

www.originalgreen.org

WELLNESS *of* SPIRIT

- ★ TOGETHER *and* ALONE
- ★ DOING *for* OTHERS LESS FORTUNATE
- ★ DENYING ONESELF *of the* NATURAL *to* REACH *the*
SPIRITUAL

FELLOWSHIP TOGETHER

www.originalgreen.org

CONTEMPLATION ALONE



SILENCE

www.originalgreen.org

LOVE YOUR NEIGHBORS



www.originalgreen.org

Do for OTHERS
LESS FORTUNATE

www.originalgreen.org

DENY OURSELVES NATURAL EXCESS
in HOPE of *the* SPIRITUAL



www.originalgreen.org



the
Original
G R E E N

www.originalgreen.org